



**SEMMELWEIS**  
UNIVERSITY 1769



Asociación Europea de Lenguas para Fines Específicos

22<sup>ND</sup>

**AELFE**

**HYBRID**

**CONFERENCE**

**CHALLENGES OF LSP TEACHING AND RESEARCH  
IN THE ERA OF THE LANGUAGE TECHNOLOGICAL  
REVOLUTION**

**3<sup>RD</sup> CALL FOR PAPERS**

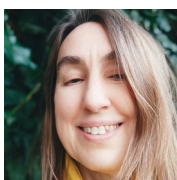
**KEYNOTE SPEAKERS**



**FÓRIS, ÁGOTA**

*KÁROLI GÁSPÁR UNIVERSITY OF THE REFORMED CHURCH IN HUNGARY*

**PROFESSIONAL COMMUNICATION, TERMINOLOGY  
AND DOCUMENTATION. KNOWLEDGE SHARING AND  
INFORMATION MANAGEMENT**



**GUINDA, CARMEN SANCHO**

*TECHNICAL UNIVERSITY OF MADRID*

**IS BREVITY REALLY THE SOUL OF WIT? THE VALUE  
OF EXTREME ABSTRACTS IN THE ESP CLASSROOM**



**HÜTTNER, JULIA**

*UNIVERSITY OF VIENNA*

**DISCIPLINARY LITERACIES WITHIN CLIL: EXPLORING  
THE NEXUS OF SUBJECTS, CONTEXTS AND LANGUAGES**



**KECSKES, ISTVAN**

*UNIVERSITY OF ALBANY, NEW YORK*

**FACE-TO-FACE INTERCULTURAL COMMUNICATION  
AND MEDIATED INTERCULTURAL COMMUNICATION  
AS RELATED TO HEALTH COMMUNICATION**



**MACI, STEFANIA M.**

*UNIVERSITY OF BERGAMO*

**THE IMPACT OF AI ON SPECIALISED TRANSLATION**

**TOPIC AREAS**

ARTIFICIAL INTELLIGENCE, CORPUS-  
BASED RESEARCH, DISCOURSE  
ANALYSIS, GENRE ANALYSIS,  
HEALTHCARE COMMUNICATION,  
INTERCULTURAL COMMUNICATION, LSP,  
NEW RESEARCH TRENDS, PRAGMATICS,  
TERMINOLOGY, TRANSLATION AND  
INTERPRETING

**DEADLINES**

**ABSTRACT SUBMISSION:  
30 JUNE, 2024**

SELECTED PAPERS MIGHT BE PUBLISHED  
IN SPECIAL ISSUES TO BE AUTOMATICALLY  
SUBMITTED FOR INDEXING.

**REGISTRATION: 30 JULY, 2024**

**REGISTRATION AND  
PROGRAM INFORMATION**

[AELFE2024@SEMMELWEIS.HU](mailto:AELFE2024@SEMMELWEIS.HU)  
[www.semmelweis.hu/szaknyelv/en/aelfe2024/](http://www.semmelweis.hu/szaknyelv/en/aelfe2024/)

VENUE: SEMMELWEIS UNIVERSITY, BASIC MEDICAL SCIENCE CENTER (EOK)

**6-7 SEPTEMBER,**

**2024**

**BUDAPEST, HUNGARY**