

Plasma proteins, methods in protein chemistry

Tamás Kőszegi

University of Pécs

**Department of Laboratory
Medicine**

The protein paradox

Daily protein turnover

75g intake

300g – total body protein synthesis

75g – muscles

70g – digestive fluids

20g – blood plasma

20g – leukocytes

8g – hemoglobin

2g – skin

200g – recycling

10g loss

Composition of blood plasma - the protein paradox

By origin: cell constituent

product (e.g. export from liver)

Molecular anatomy: monoclonal – albumin

polyclonal – all globulins

Fate of plasma proteins

Biological half-life: production - elimination

**rapid: coagulation factors, hormones,
acute phase proteins, biological
response modifiers**

slow: albumin, immunoglobulins

Total plasma protein determinations

Salting out, precipitation - gravimetry

UV absorbance - 280nm, 220nm

Fluorescence - aromatic amino acids

Photometry - Biuret reaction (all proteins)
- bromochresol green (albumin)

Reference range **total protein: 60-80g/l**
albumin: 35-45g/l

Interpretation of total protein measurements

Hyperproteinemia: dehydration

multiple myeloma

Hypoproteinemia: increased plasma volume

decreased synthesis

protein loss

Hypoalbuminemia: decreased synthesis

albumin loss

Not nutritional parameters!

Analysis of individual proteins

Protein separation techniques

Column chromatography: gel filtration, ion exchange, affinity, HPLC (peptides)

Electrophoresis: free (capillary)
paper, starch, agar,
agarose, cellulose acetate,
polyacrylamide

Principles of electrophoresis

Amphoteric amino acids:

monoamino monocarbonic

monoamino dicarbonic

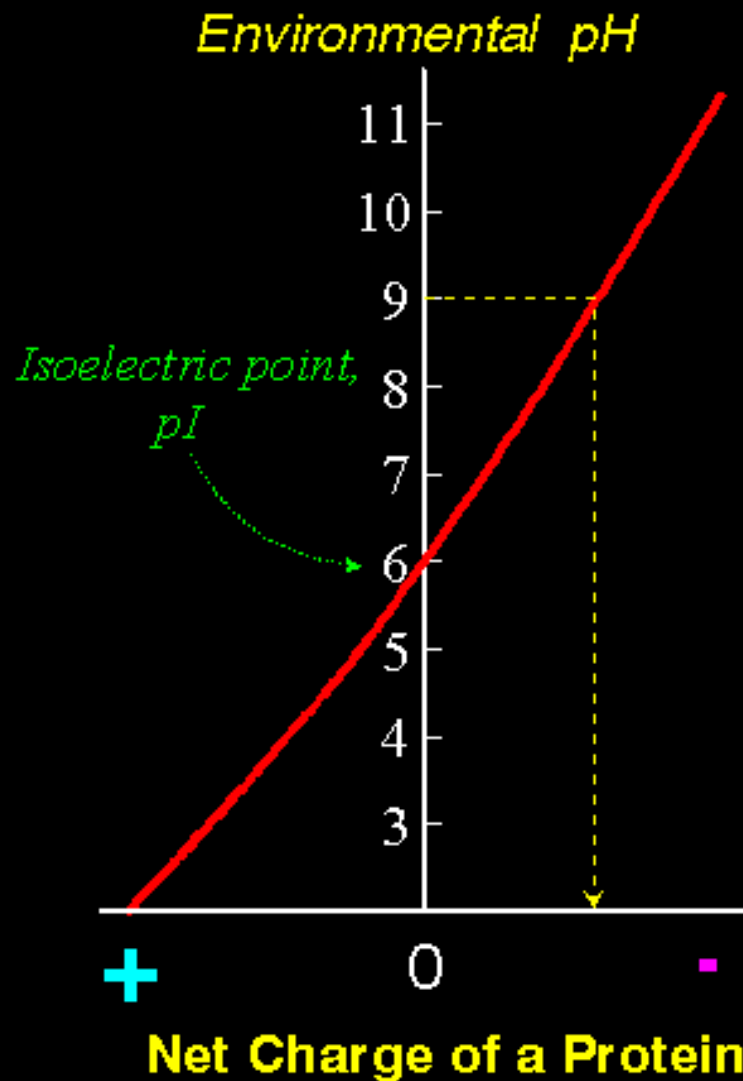
diamino monocarbonic

Posttranslational modifications!

Isoelectric point, dissociation (albumin)

**Running medium, fixation, staining
by charge – by molecular mass**

Charge of a protein



Protein electrophoresis

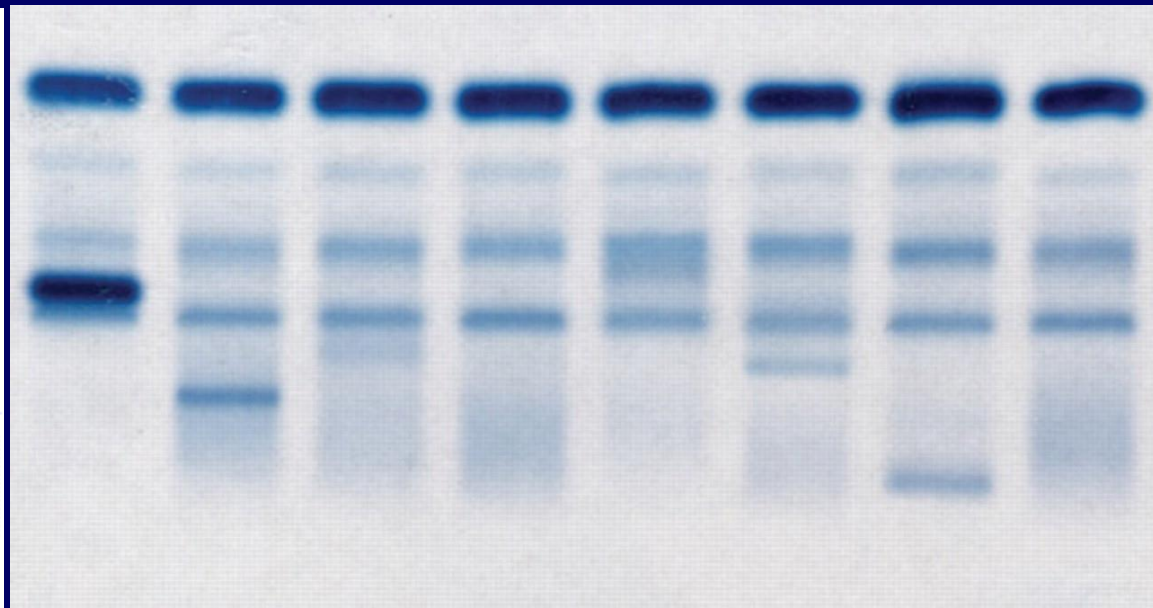
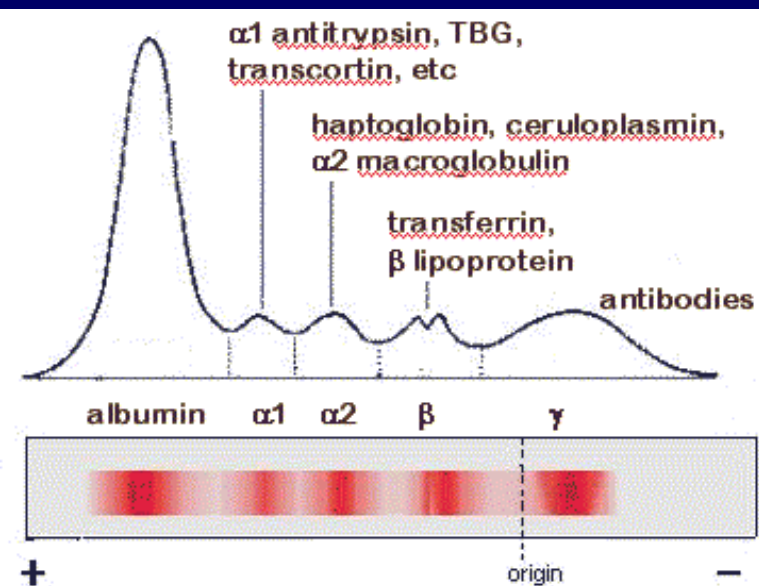
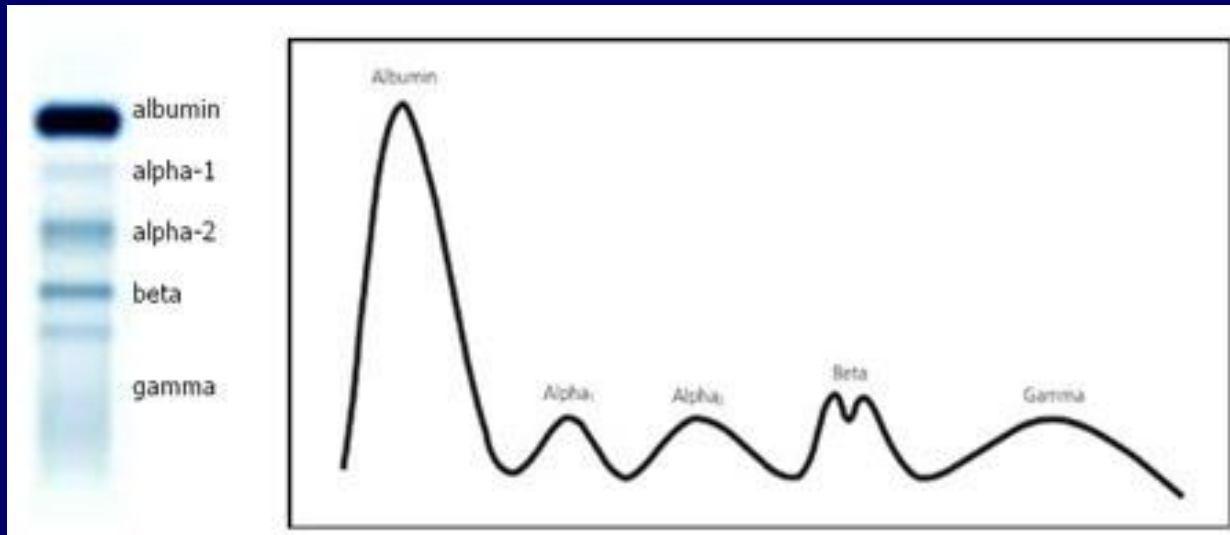


Nitrocellulose membrane

Amido black

Ponceau S

Protein electrophoresis



Immune fixation

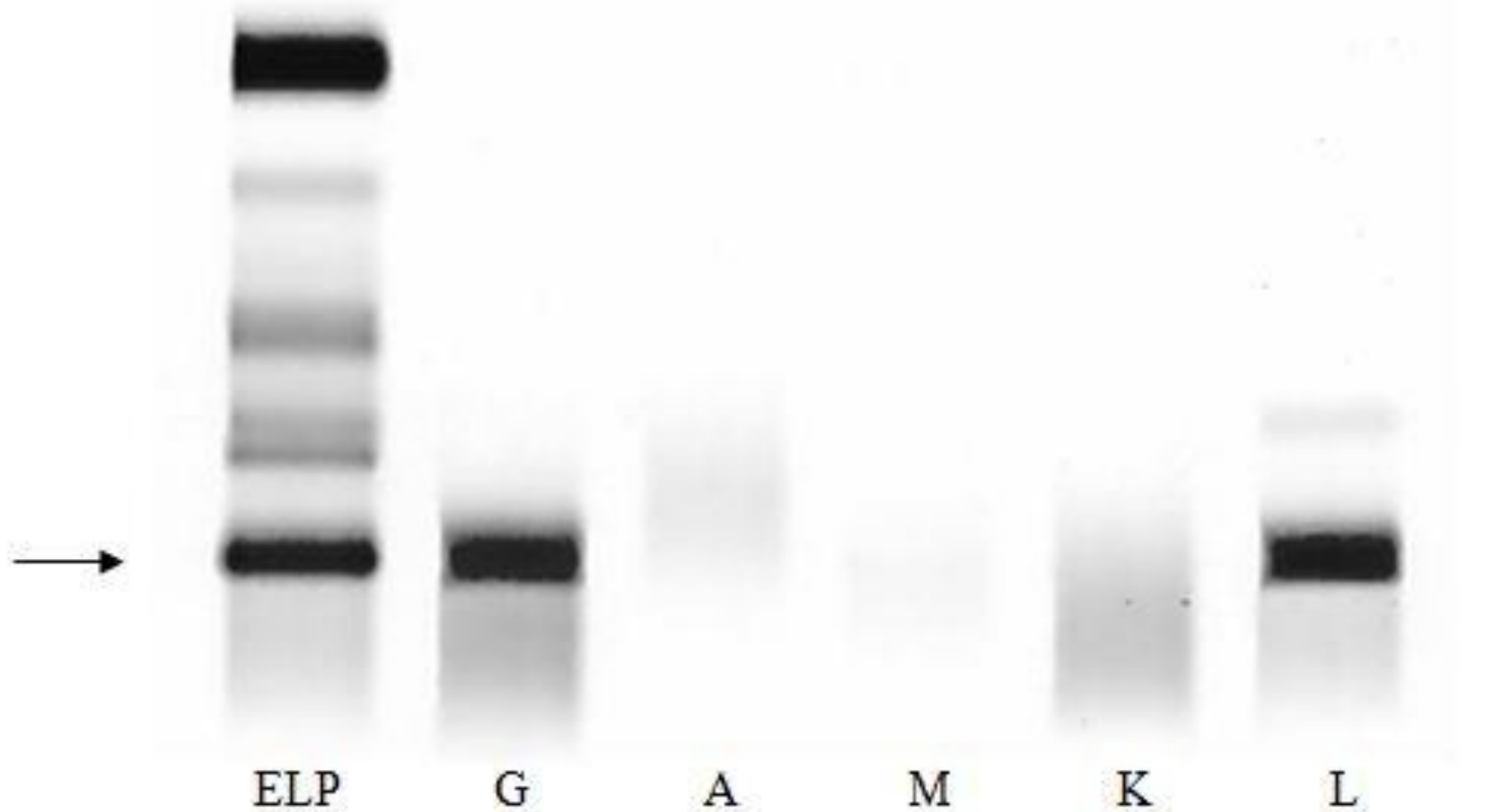


Figure 1

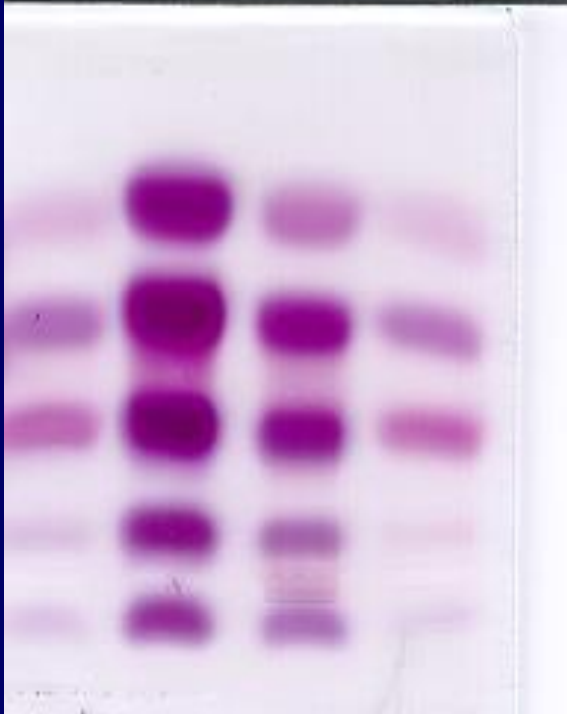
+



LDH isoenzyme test

Agarose gel

-

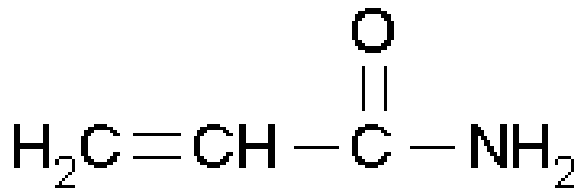


LDH 1
2
3
4
5

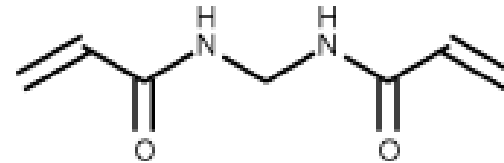
Protein electrophoresis

Polyacrylamide gel

Acrylamide



Bis, [N,N'-methylene-bis(acrylamide)]

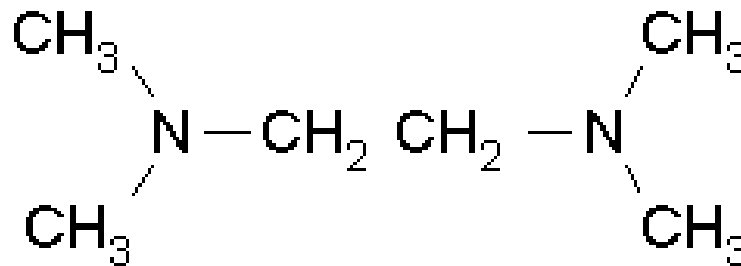


TEMED

Ammonium persulfate

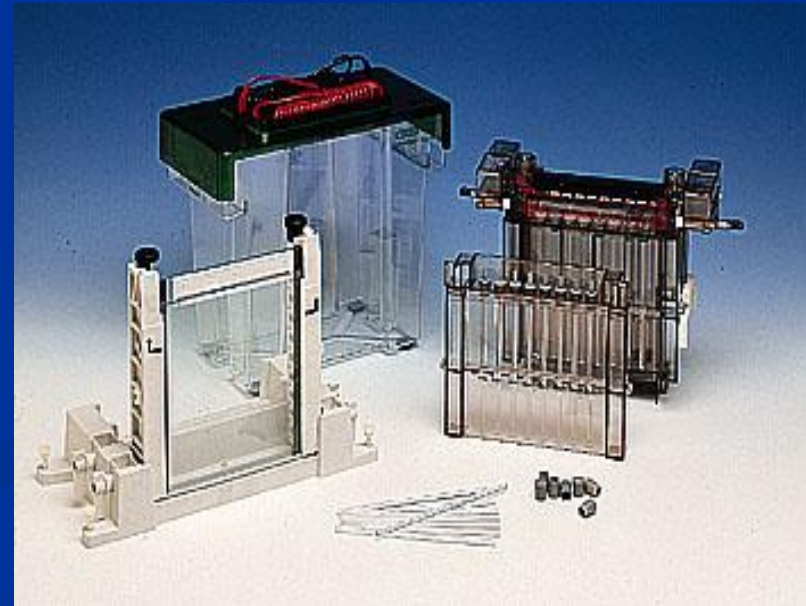
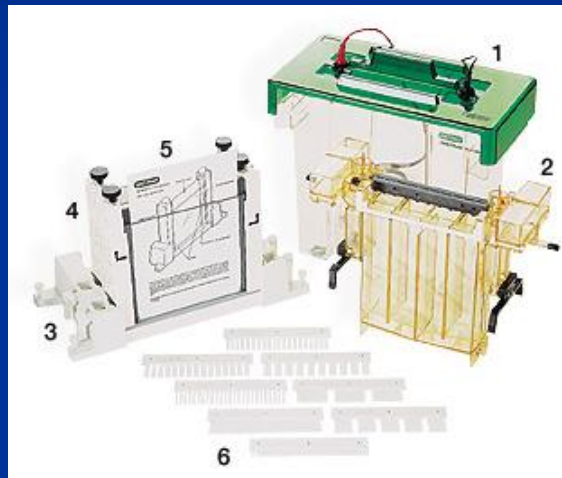


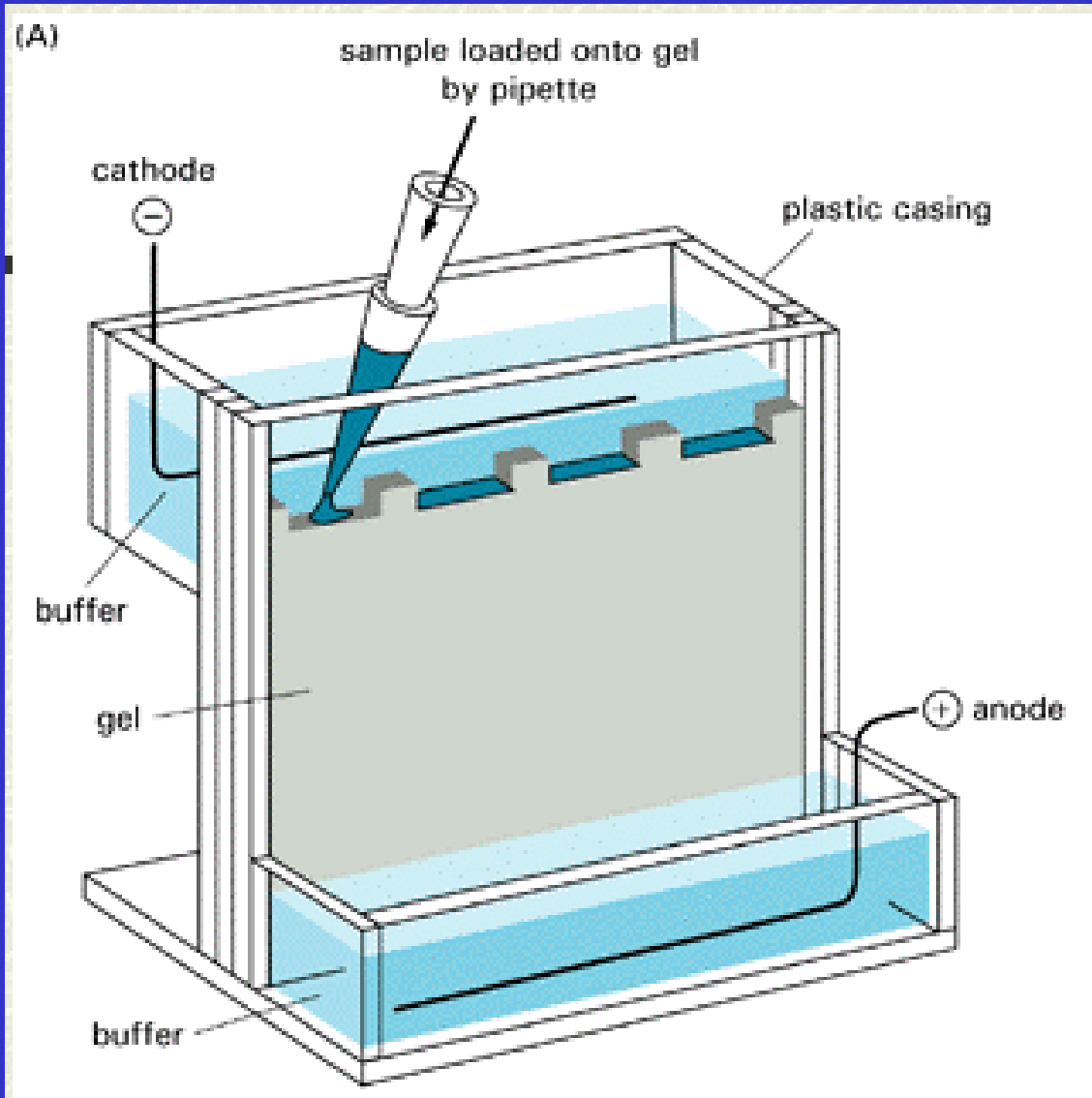
(tetramethylethylenediamine)



Choice of electrophoretic system

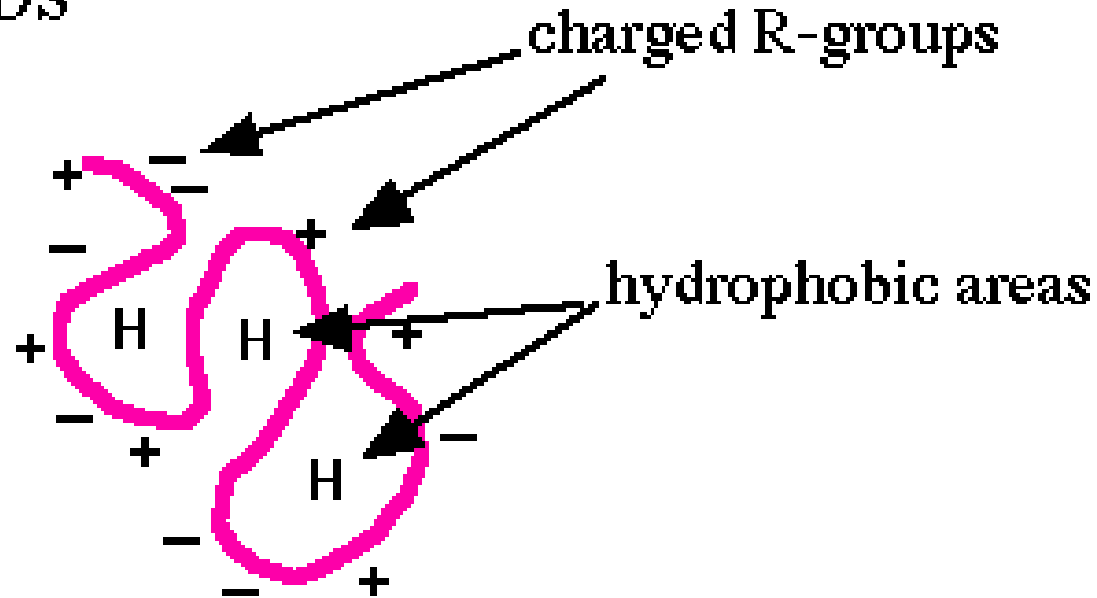
Bio-Rad



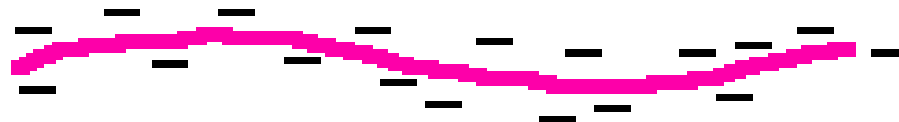


Denaturing

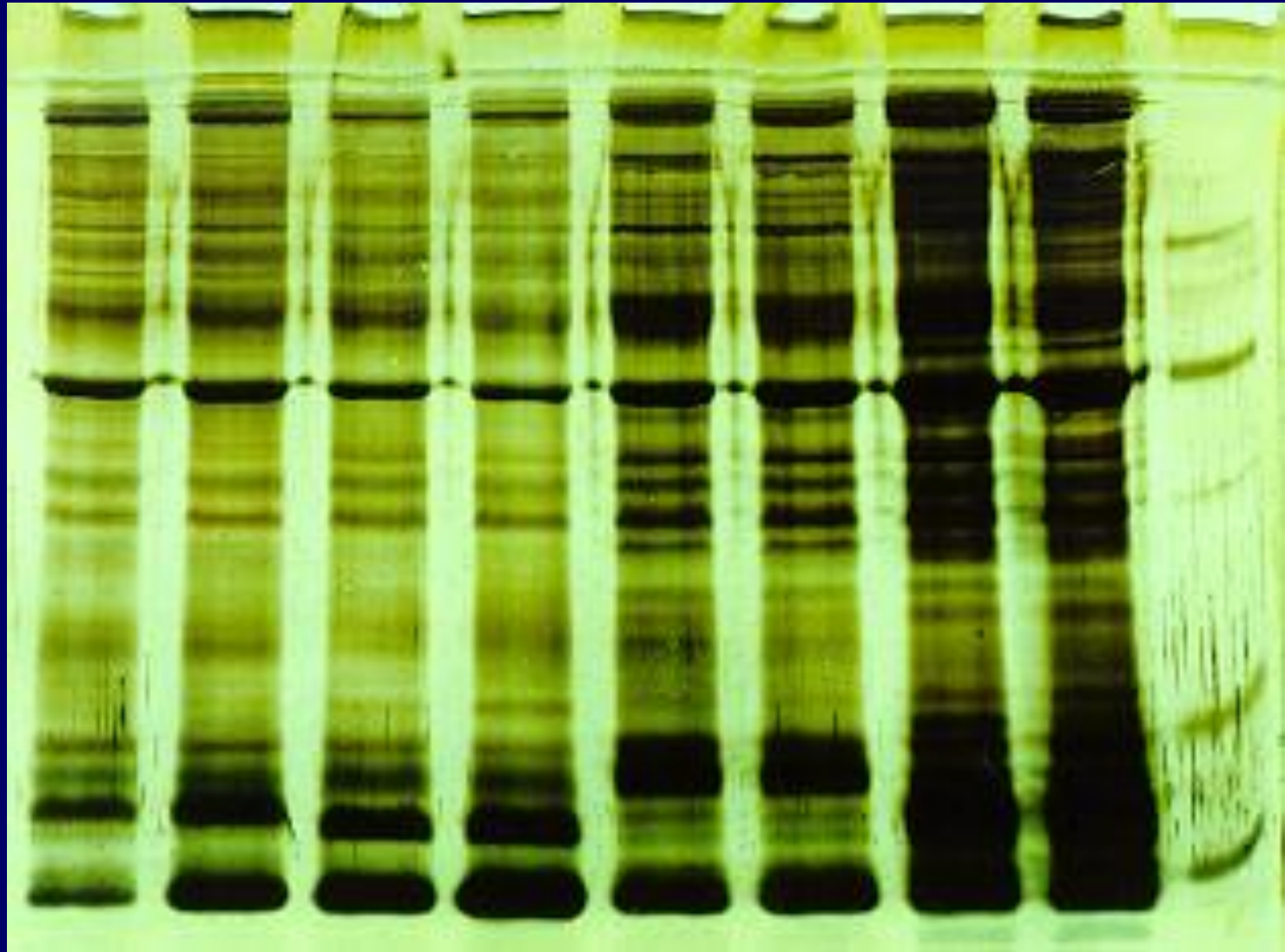
BEFORE SDS



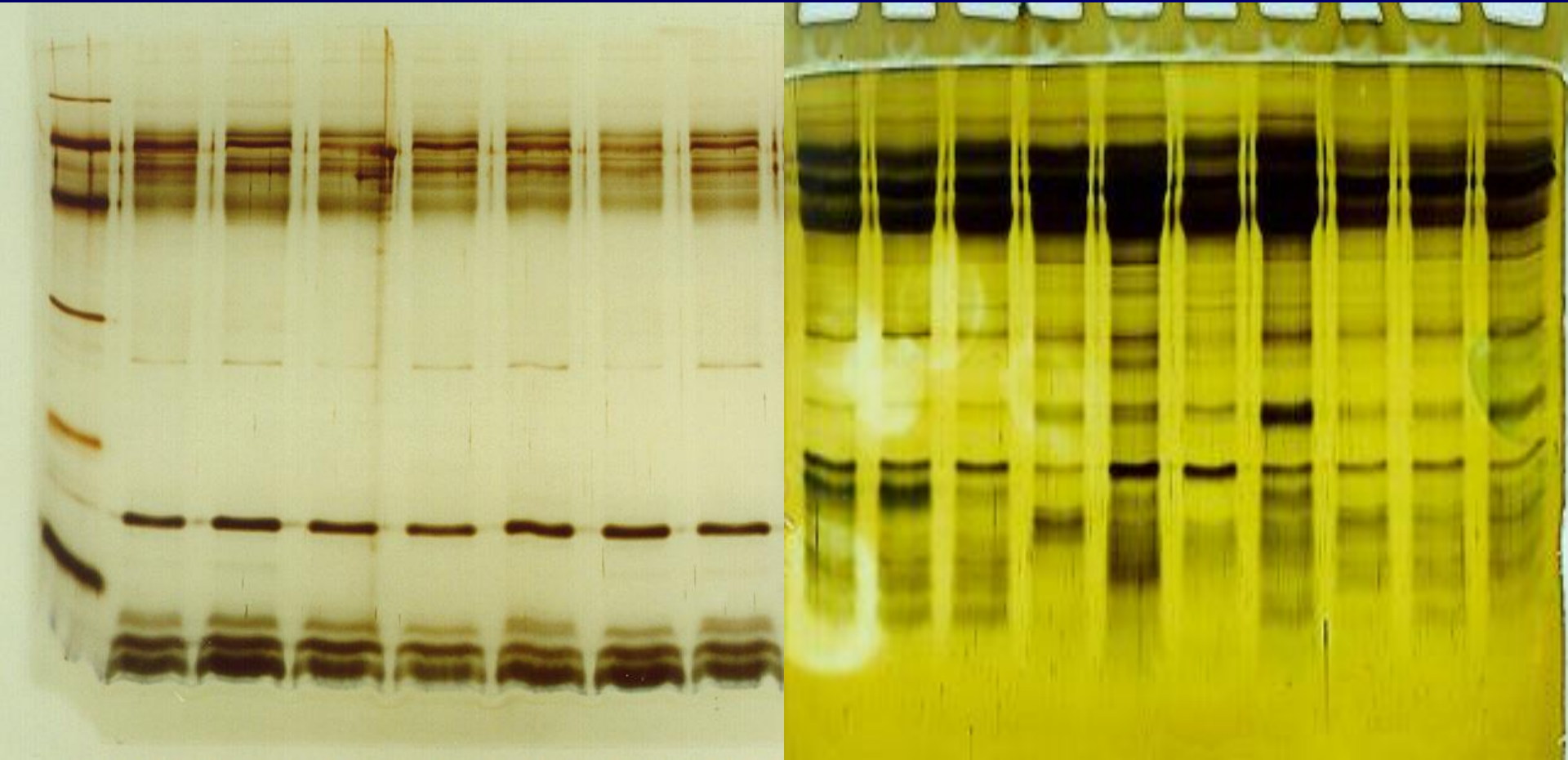
AFTER SDS



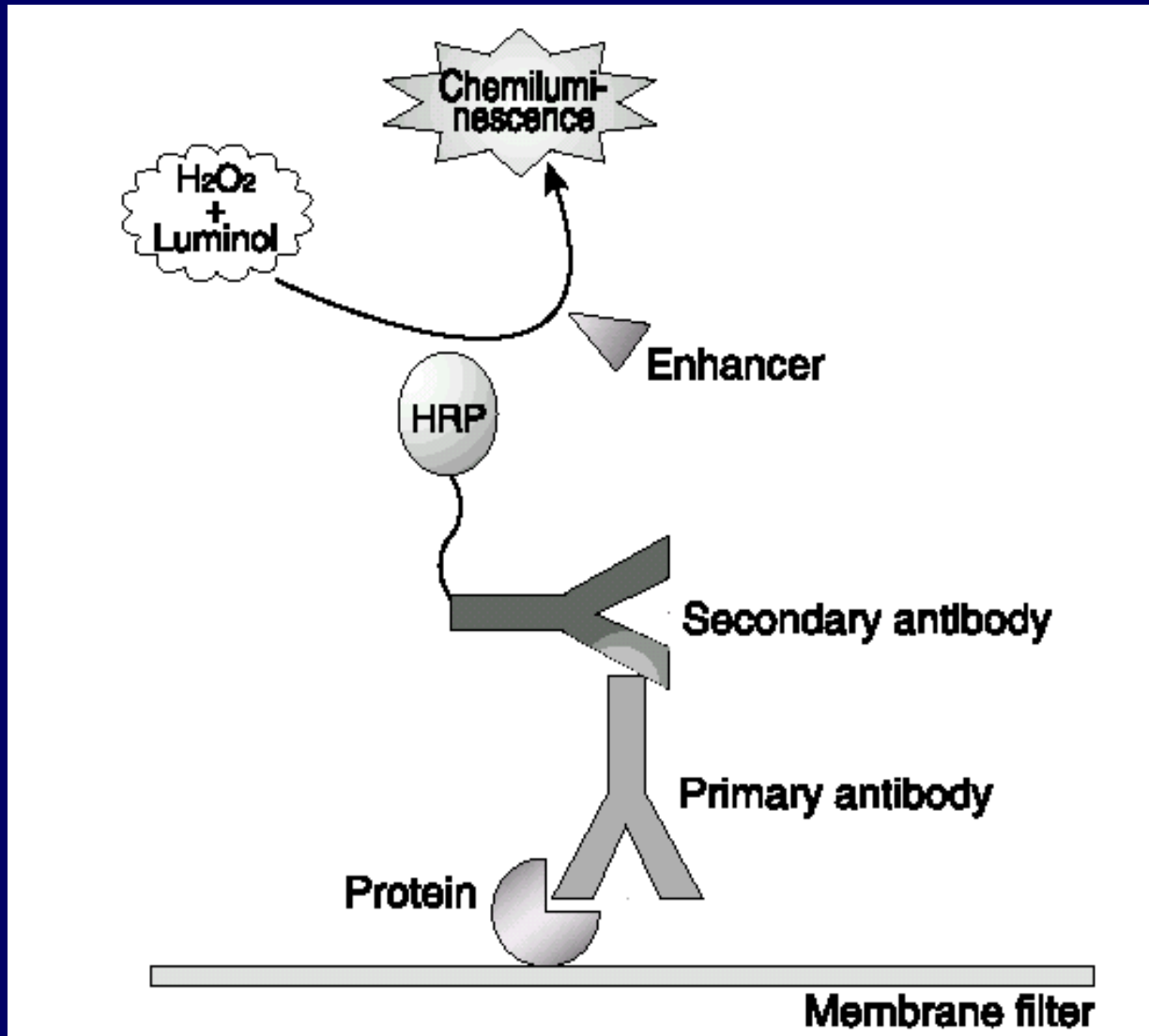
SDS-PAGE of human platelets



Protein pattern of healthy individuals and cancer patients



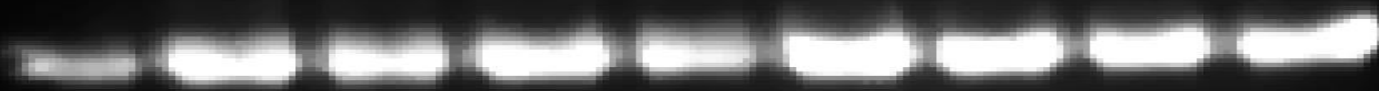
Principles of immunoblotting



Chemiluminescent detection of dot blots



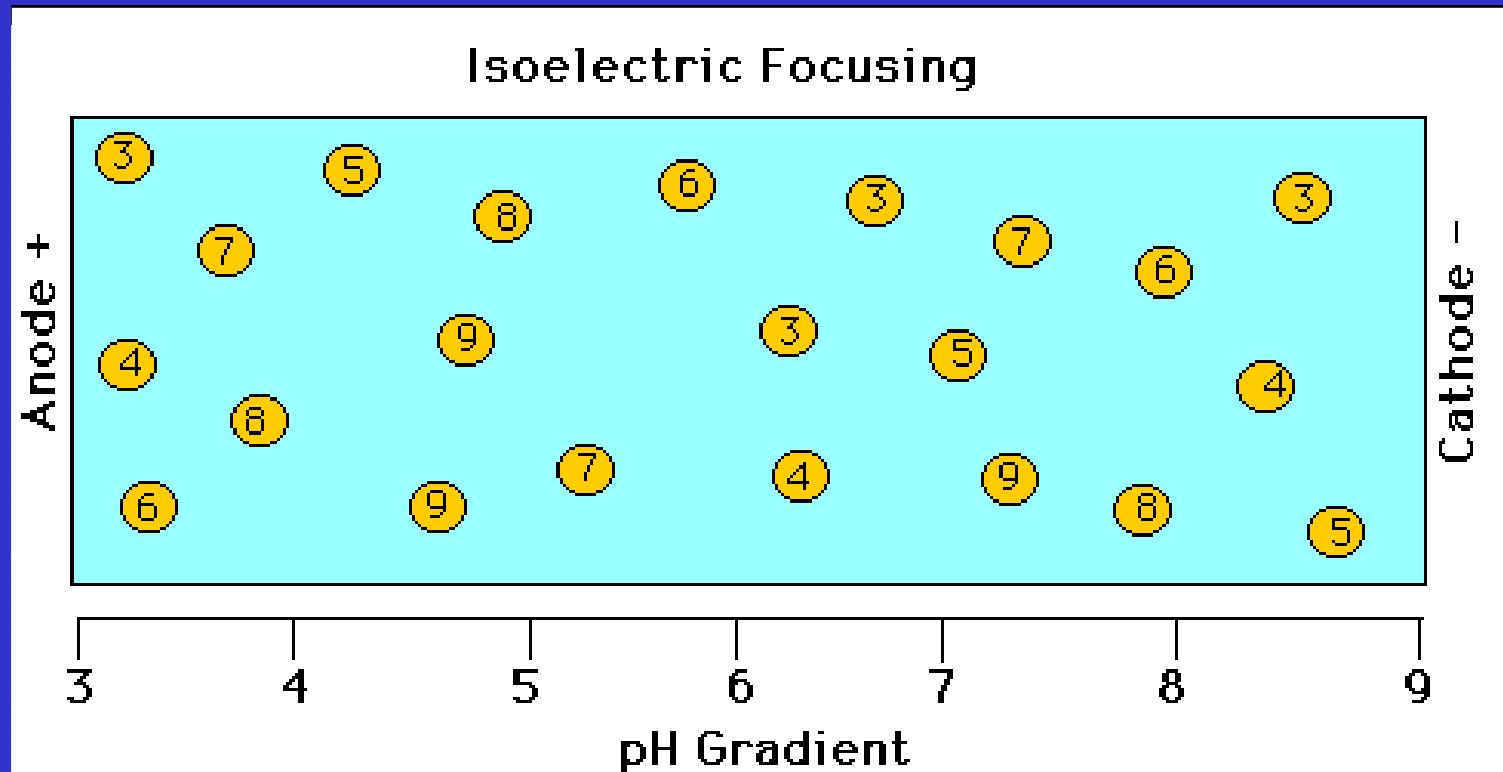
Chemiluminescent detection of orosomucoid



Anti-human (rabbit) orosomucoid glycoprotein

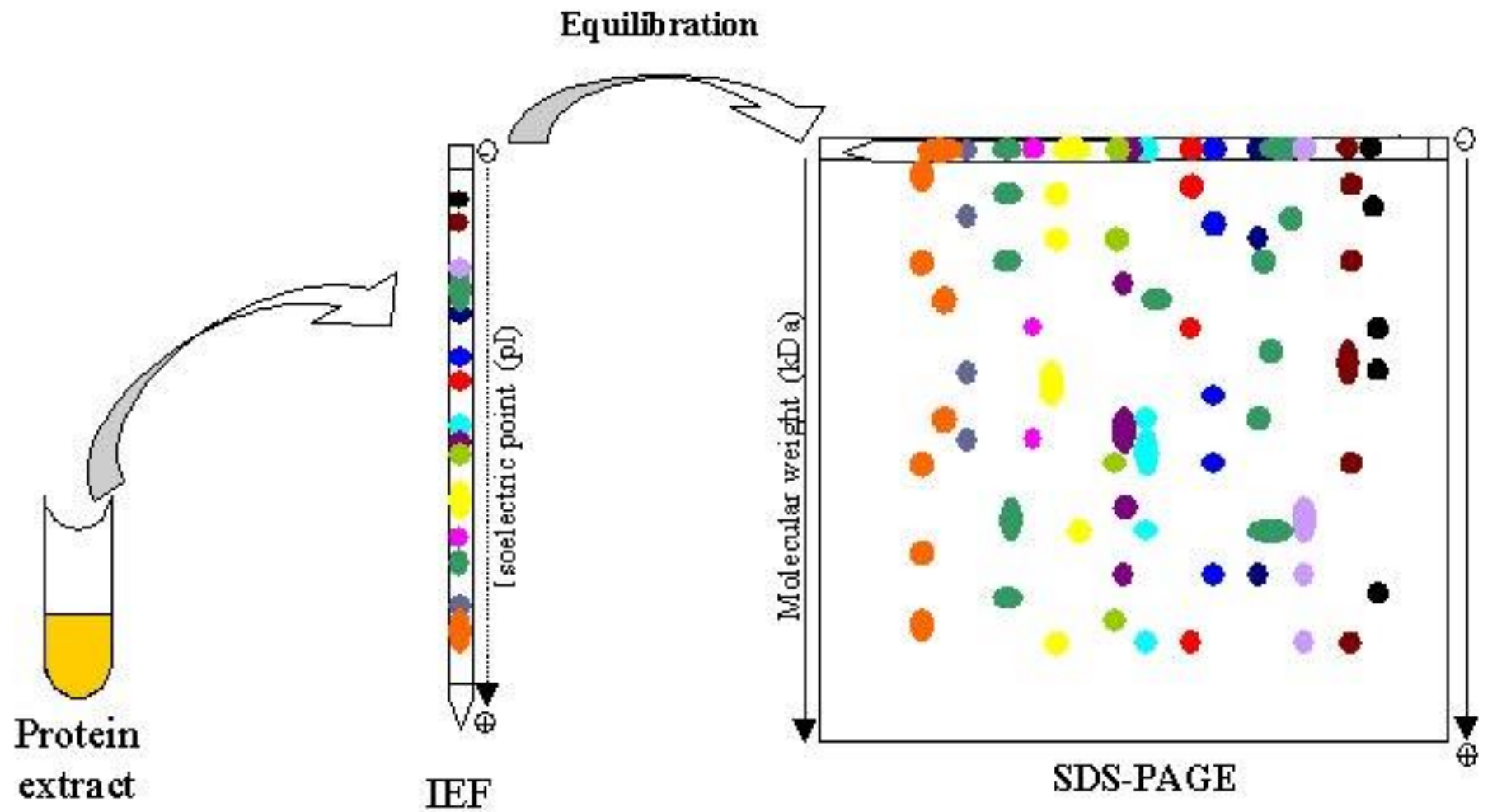
HRP labeled anti-rabbit IgG

Isoelectric focusing

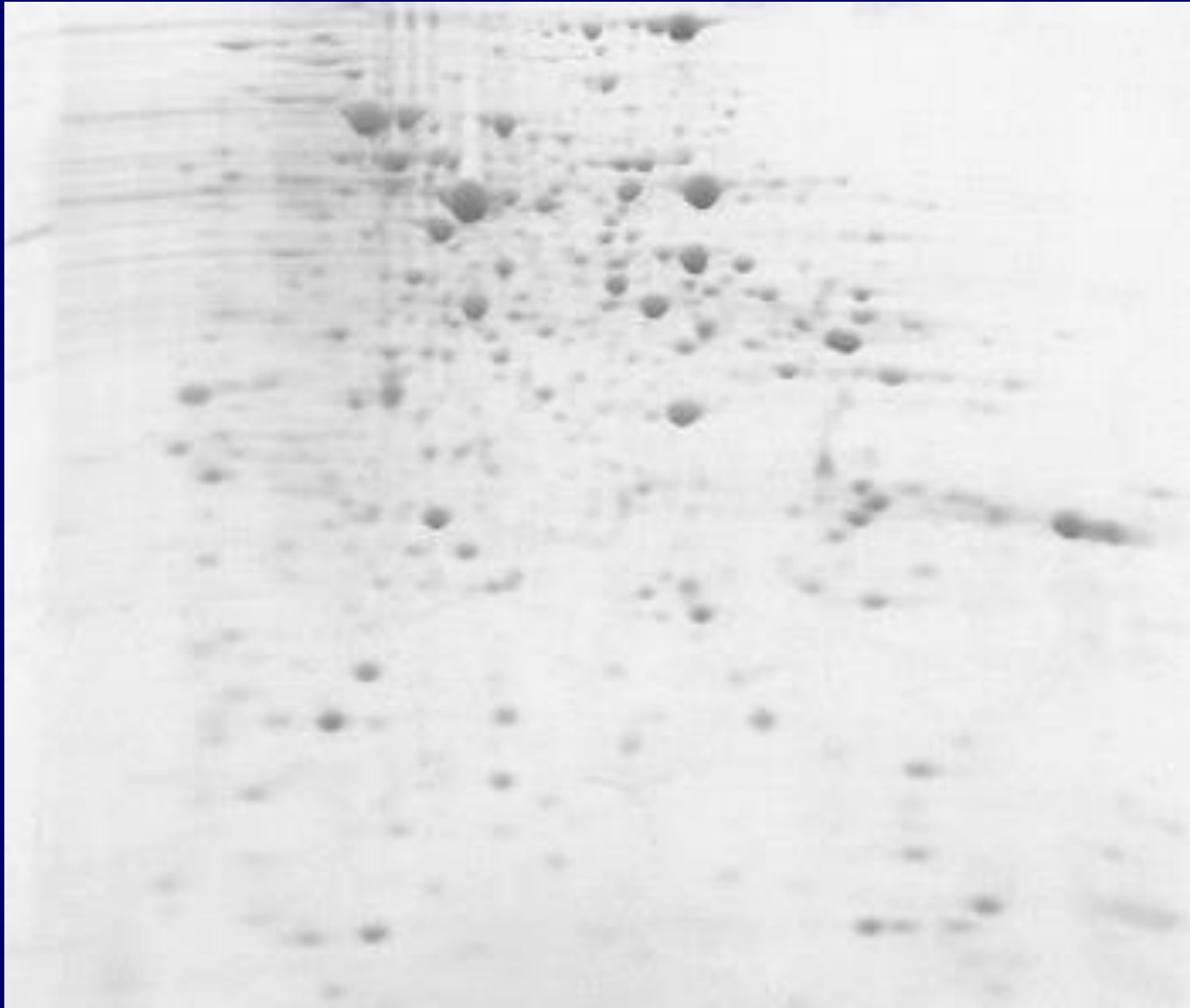


http://www.aber.ac.uk/parasitology/Proteome/Tut_2D.html#Section%203

2D electrophoresis



2D electrophoresis

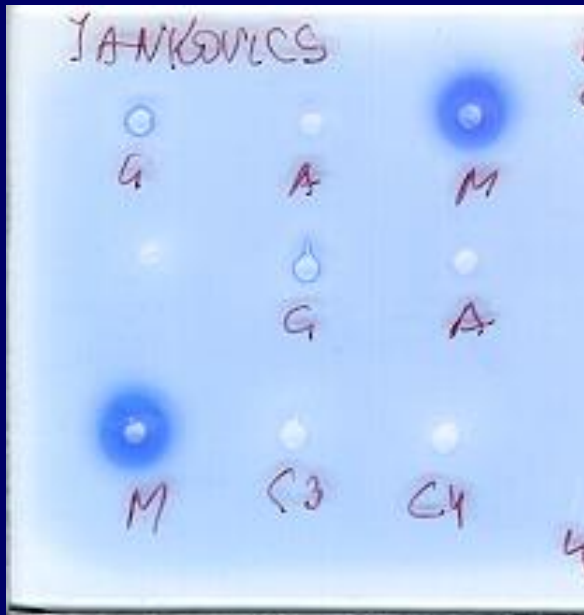


Quantitative measurement of individual proteins

Immune diffusion

Rocket immune elpho

Antigen-antibody reaction detection with quantitative analysis



Automated quantitative measurement of individual proteins

- **Immune turbidimetry**
- **Nephelometry**
- **Immuno assays**