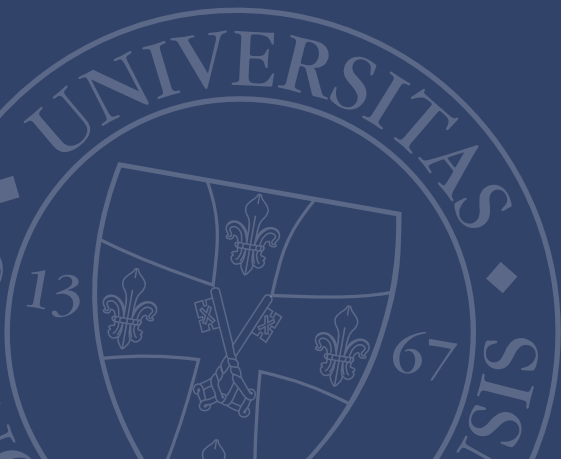




PÉCSI TUDOMÁNYEGYETEM
ÁLTALÁNOS ORVOSTUDOMÁNYI KAR

www.aok.pte.hu

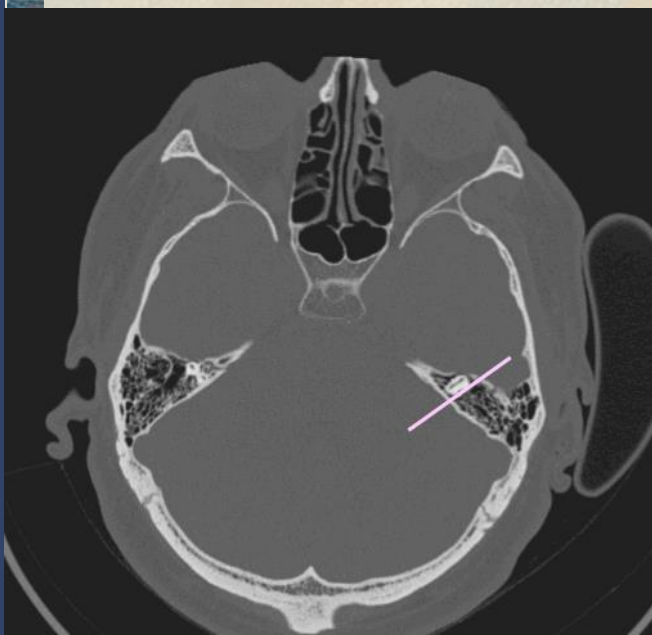
Koponya CT elemzése (otológia)



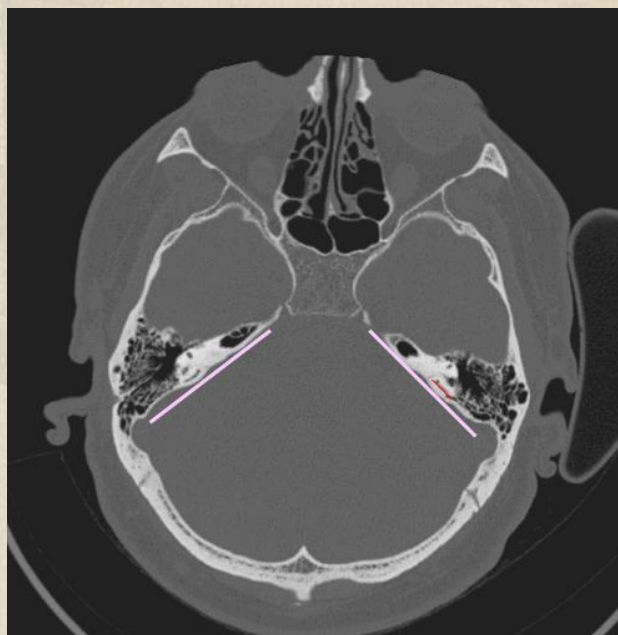
Miképp nézzük át a CT-t?

Axialis síkkal kezdjük, felülről indulva

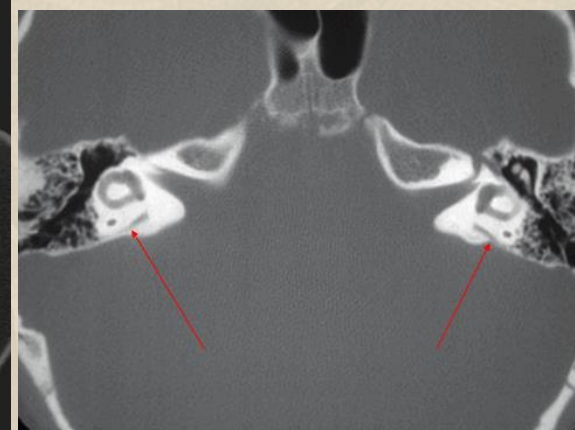
1. Anterior ívjárat



2. Hátsó félkörö ívjárat

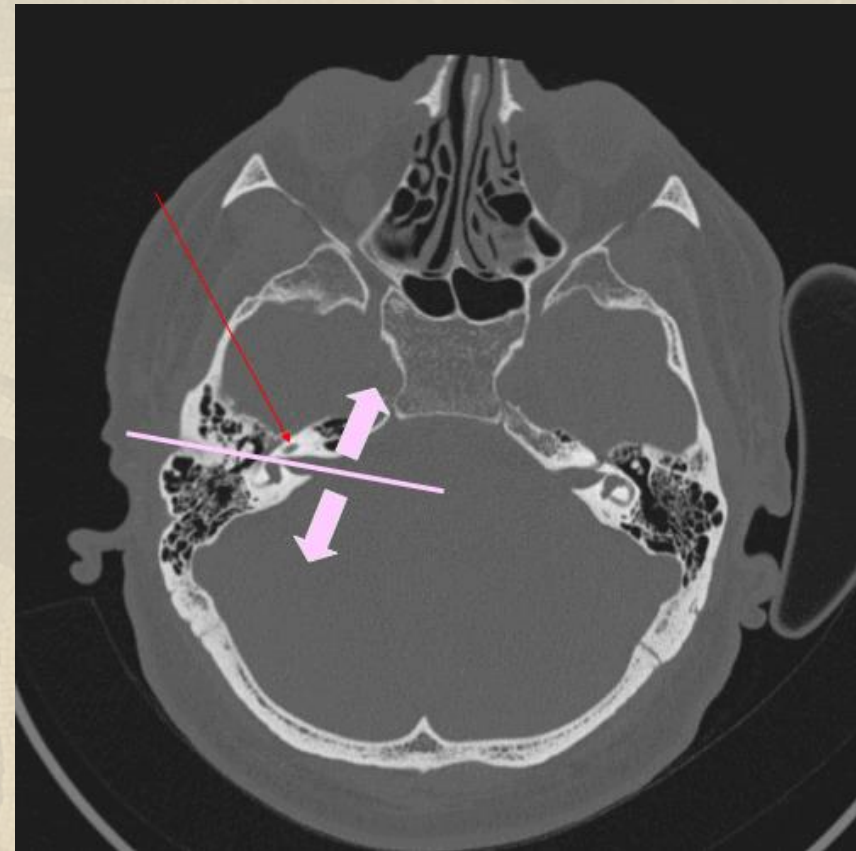
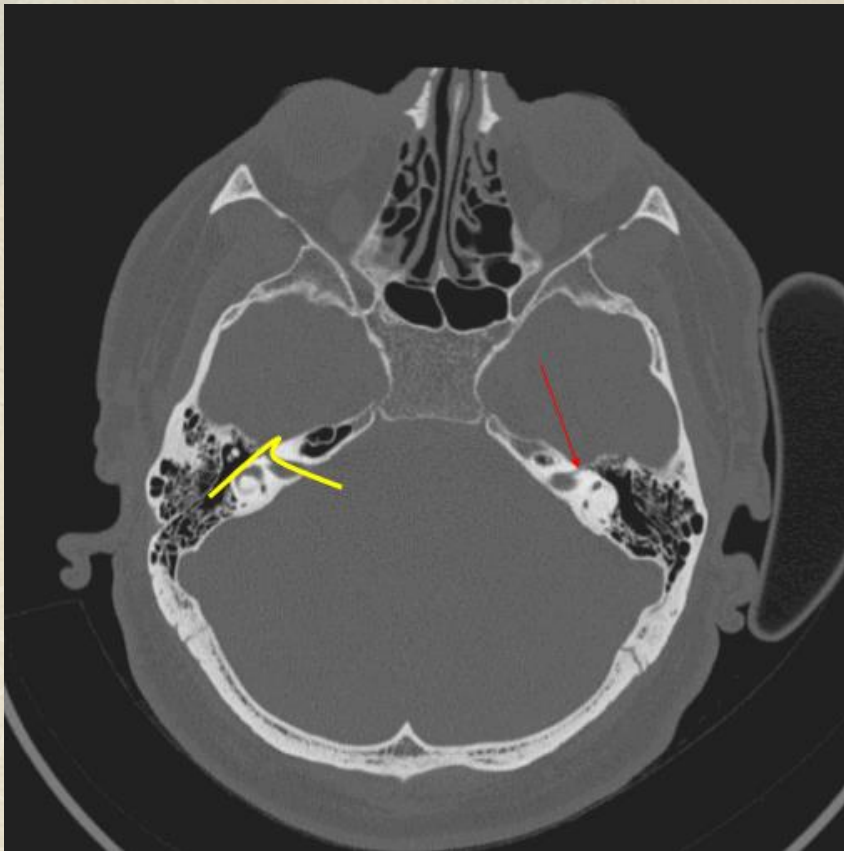


3. Aqueductus vestibuli

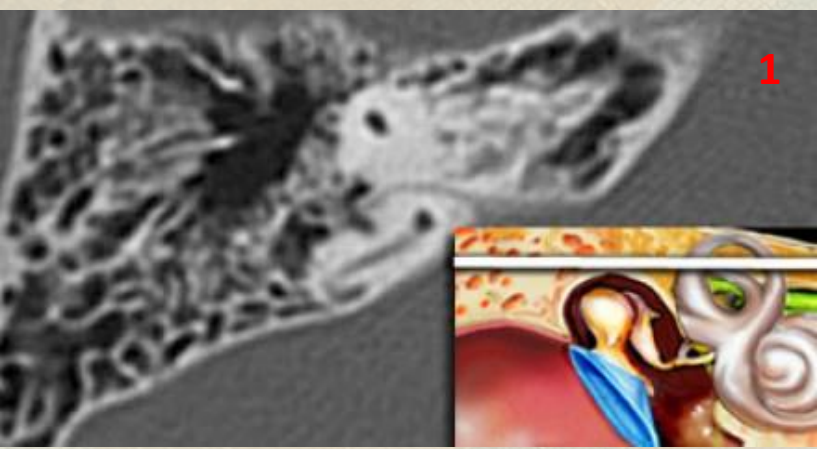


A nervus facialis lefutása

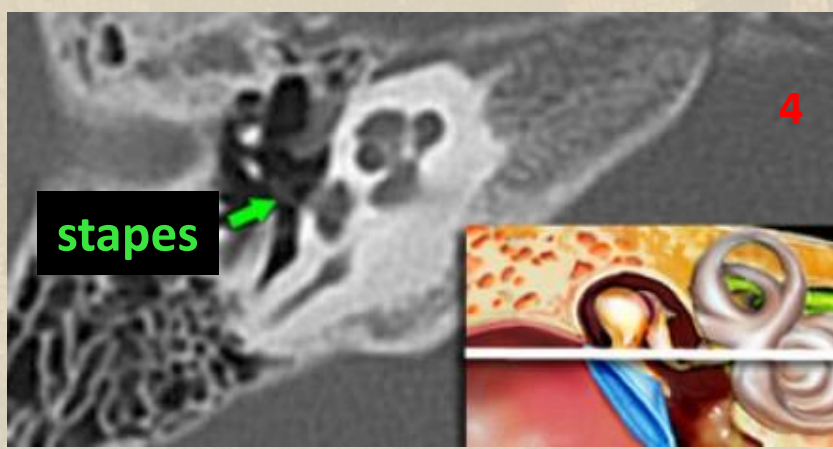
A belső hallójárat előtt a
cochleáris, mögötte a
vestibularis rendszer
foglal helyet!



1

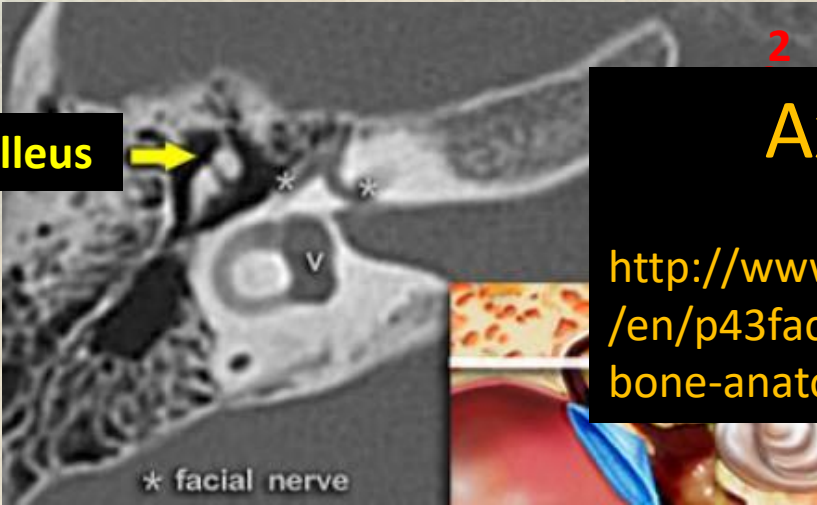


4



stapes

2



malleus



* facial nerve

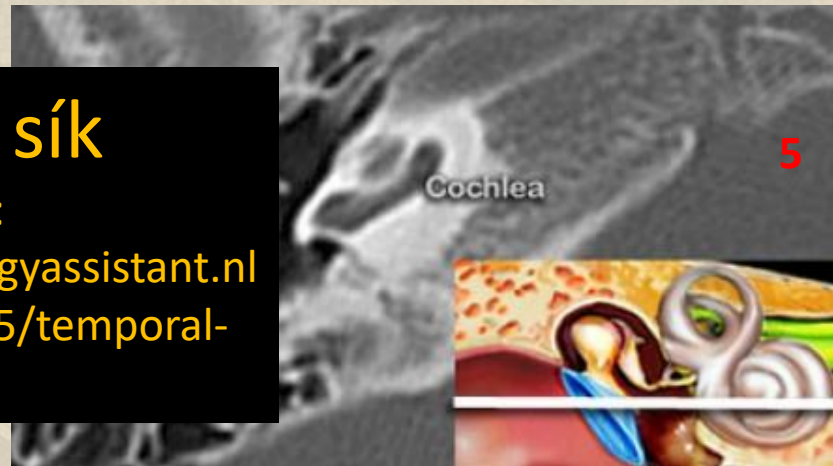
v

Axiális sík

Forrás:

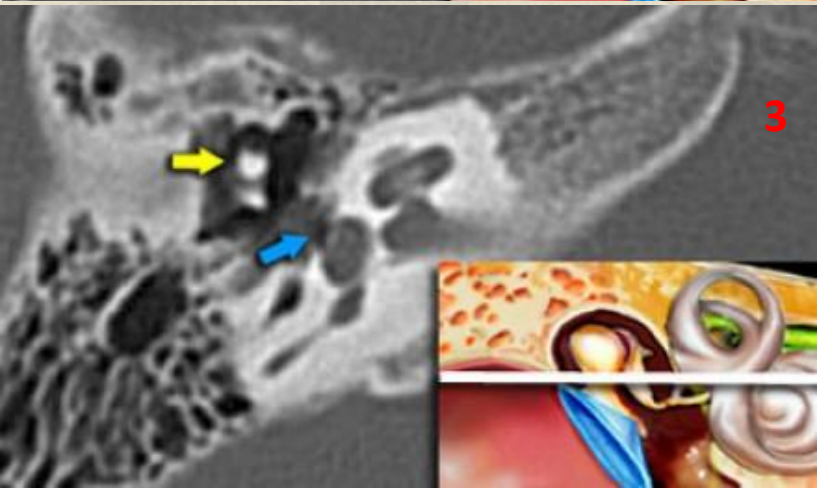
<http://www.radiologyassistant.nl/en/p43facba0911f5/temporal-bone-anatomy.html>

5



Cochlea

3



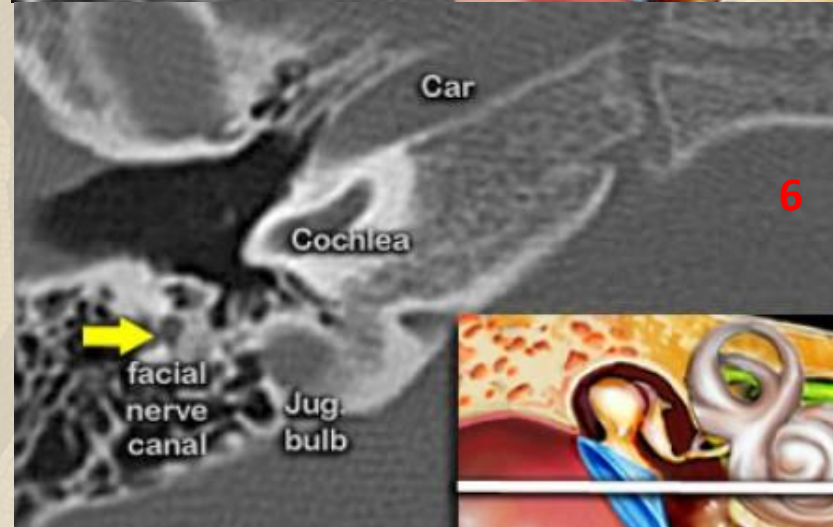
Car

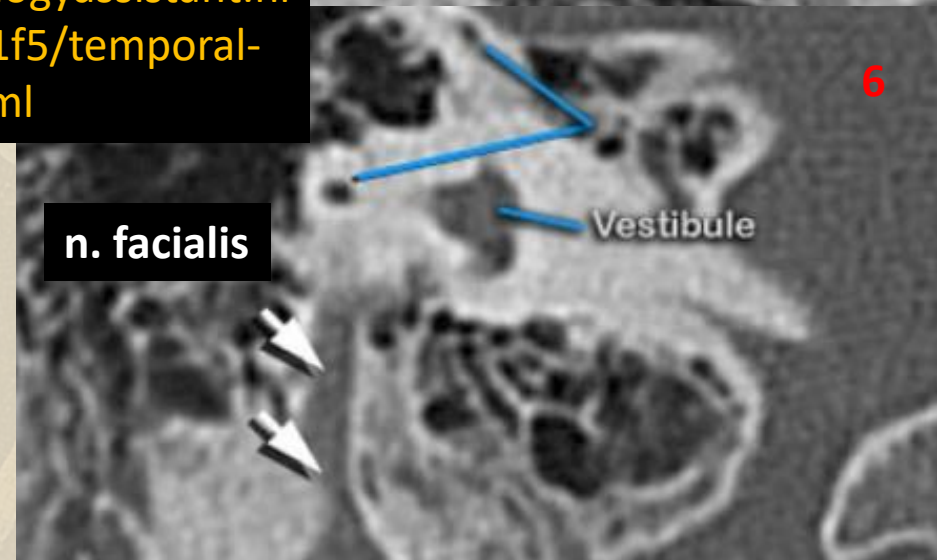
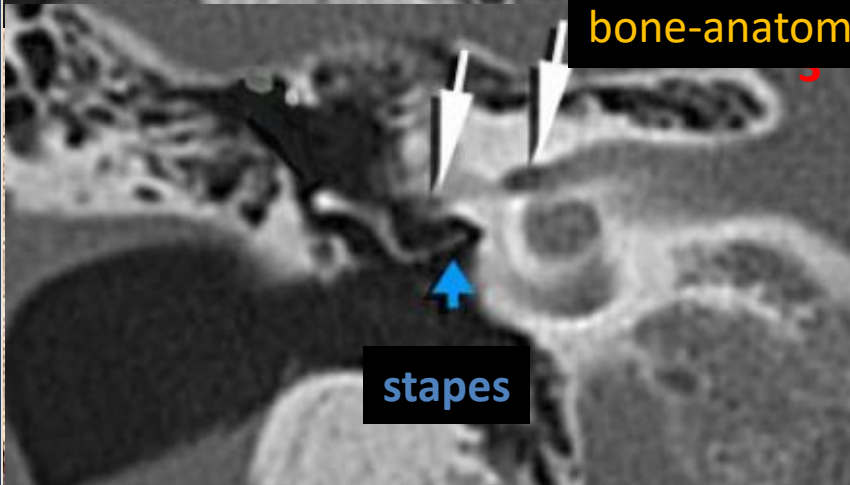
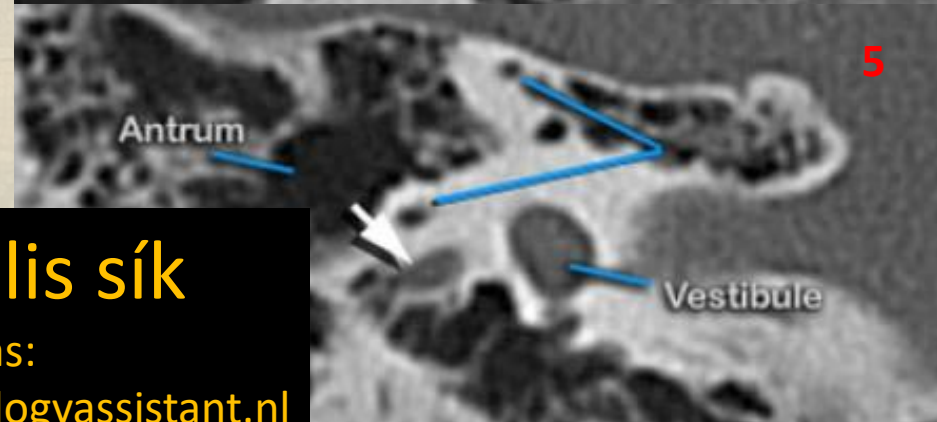
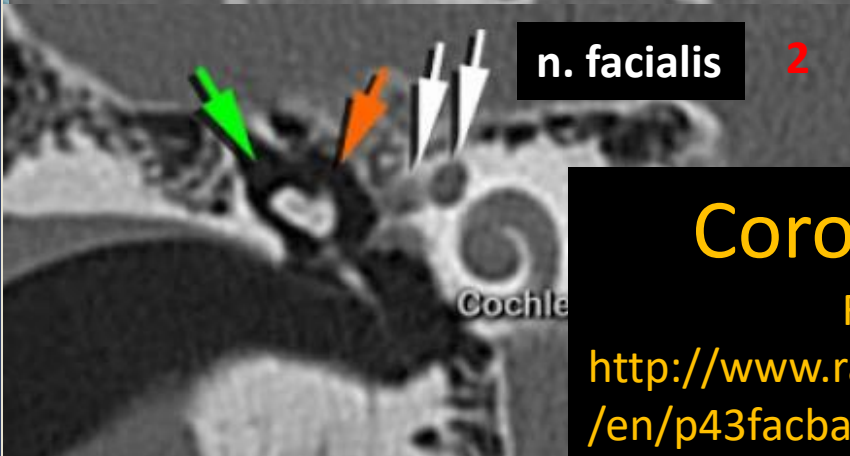
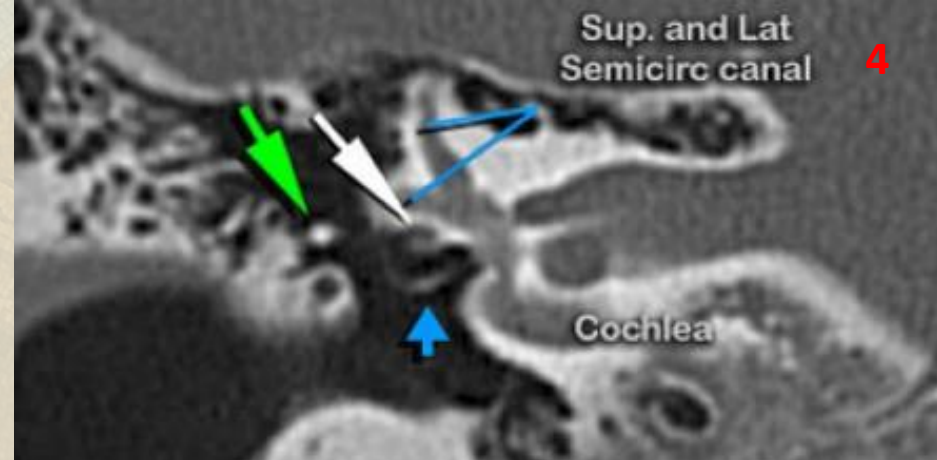
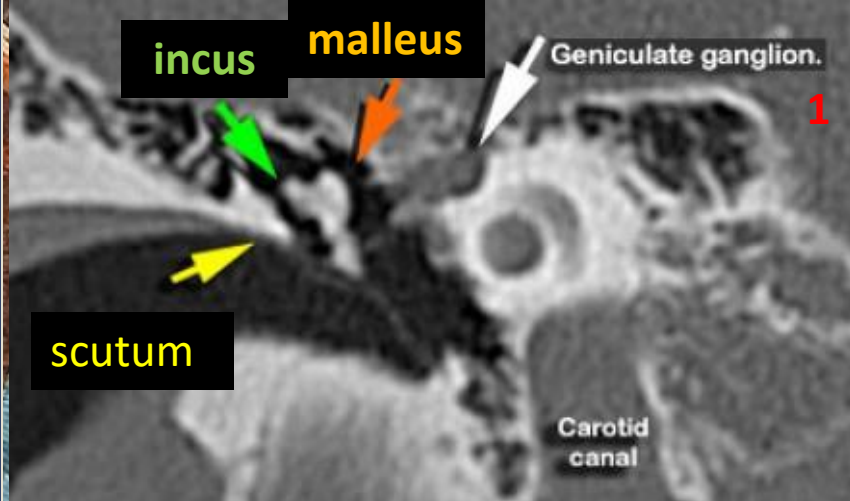
Cochlea

facial nerve canal

Jug. bulb

6





Coronalis sík

Forrás:

<http://www.radiologyassistant.nl/en/p43facba0911f5/temporal-bone-anatomy.html>

A halántékcsontról lézióinak kimutatása, összefoglalás

- ◆ *Intracochlearis laesio*- CT, MR egyaránt alkalmas
- ◆ *Fejlődési rendellenességek* -hártyás labirintus-MR, csontos labirintus –CT
- ◆ *Középfül pathológia, otosclerosis gyanú, csontbetegségek (Paget stb.), trauma*- HRCT
- ◆ *Gyulladások, intralabyrinth-, kisagy-hídszögleti tumorok* -MR